

Ralph McCaskey Artist Bio

Posted on [August 24, 2012](#) by [dale_beevers](#)

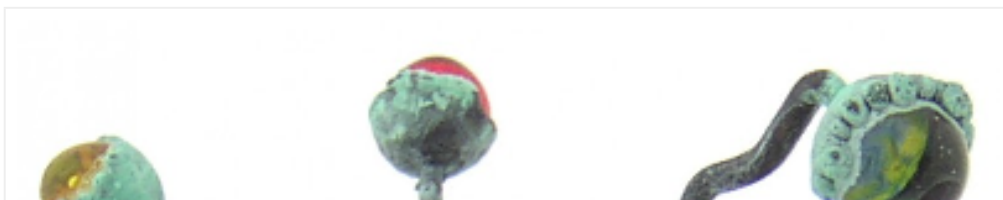
Started working with glass in 1999 in Pinole, CA.

www.nightsidestudios.com

Ralph McCaskey has been creating sculptural glass beads for 13 years in his subterranean studio 3-1/2 stories beneath Downtown California. He wishes to thank his wife for making it possible, and his children for making it necessary.



- “Ghastly Trio”
Ralph McCaskey
November, 2008
Soda Lime glass, copper
(left to right) 2” x 1” x 1.25”; 2” x 2.25” x 2”; 1.5” x 2” x 2.5”





— “Blind Spot”
Ralph McCaskey
September, 2007
Soda Lime glass, copper, verdigris patina
2” x 2” x 3.5”